

大帽山郊野公園遊客中心

Tai Mo Shan Country Park Visitor Centre

大帽山郊野公園遊客中心設有展覽廊及活動室。中心的展覽廊共分為五個主題部份，分別介紹大帽山郊野公園、全球及香港的氣候變化、氣候變化對本港的樹林、生態系統以至極地的影響。展覽廊設有多元互動的展品及遊戲，令大家明白愛護郊野環境以及珍惜地球資源的重要性。

Tai Mo Shan Country Park Visitor Centre comprises an exhibition gallery and an activity room. The exhibition gallery consists of five themes which introduce Tai Mo Shan Country Park, climate change in global and local perspectives, the effect of climate change in local forests, ecosystem and the effect of climate change at polar regions. The Centre is designed to provide a self-learning platform and foster public awareness of nature conservation and resources conservation.



中心入口的展覽介紹大帽山郊野公園一帶秀麗的風景以及康樂和郊遊設施。

The exhibition at the entrance of the gallery introduces the facilities and scenic vista at Tai Mo Shan Country Park.



第二部份展覽以圖像、短片、展品及互動遊戲介紹氣候變化的成因、現象及影響，讓大眾明白珍惜地球資源的重要性。

The second part of the exhibition introduces the causes, observed phenomena and impacts of climate change through images, videos, exhibits and interactive games with an aim to evoke the importance of protecting the Earth resources.



第三部份展覽透過珍貴的圖片及紀錄短片，展現極端天氣對香港的影響，呼籲大眾攜手應對氣候變化。

The third part of the exhibition showcases the impact of extreme weather in Hong Kong through valuable images and short videos to call for concerted efforts to combat climate change.



第四部份展覽透過多媒體遊戲、短片及展板，認識大帽山及香港具保育價值的動、植物，明白愛護郊野環境對存護生物多樣性的重要性。

The fourth part of the exhibition guides you to know more about the wild animals and plants of conservation concerns in Hong Kong and Tai Mo Shan through multi-media game, video and exhibition panel.

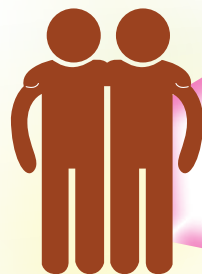


最後，乘坐破冰船向極地進發，了解我們的生活習慣如何影響本地以至極地的氣候及動植物的存活，明白「愛護環境，由我做起」的重要性。

At last, head for the Polar expedition via the ice-breaking vessel. Know more about how our living habits change the climate locally and globally and thereby affecting the survival of wildlife. Think global, act local! Act now to combat climate change!



郊區守則
Countryside Code



尊重村民，切勿損毀私人財產、農作物及牲畜。
Respect villagers and do not damage private properties, crops and livestock.



切勿隨地拋棄廢物。
Do not litter.



切勿在燒烤場或營地外生火。
Do not light fire except in barbecue areas and campsites.



切勿破壞自然景物。
Do not vandalize natural features.



尊重其他遊人，盡量降低聲量。
Respect other visitors and keep the noise down.



愛護郊區，保存大自然美景。
Protect countryside and preserve natural landscapes.



切勿污染水源。
Do not pollute water.



切勿損害野生動植物及其生長環境。
Do not destroy vegetation, wildlife and their living environment.



開放時間
Opening Hours

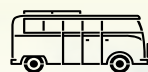
逢星期一、三至日，上午九時三十分至下午四時三十分
逢星期二（公眾假期除外）、農曆新年年初一及初二休館

Every Monday, Wednesday to Sunday,
from 9:30 am to 4:30 pm.
Closed on Tuesdays (except Public Holidays) and
the first two days of Chinese New Year.



如何前往
How To Get There

51 號巴士
Bus No.51



荃灣西鐵路總站
Tsuen Wan West Railway
Station Bus Terminus

郊野公園站
Country Park



大帽山郊野公園遊客中心
Tai Mo Shan Country Park Visitor Centre



漁農自然護理署
Agriculture, Fisheries and
Conservation Department